

Nizpro heavy duty bushing kit suit Yamaha 4.2L V6



Please thoroughly read through the entire instruction manual prior to starting the job.

Required instillation tools:

Drill, 1/8th BSP Tap

8.8mm drill bit

3mm drill bit

Centre punch

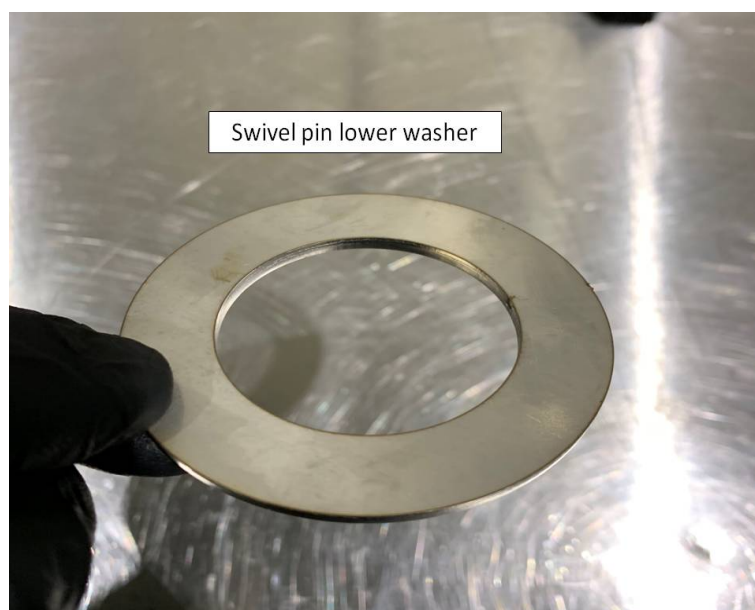
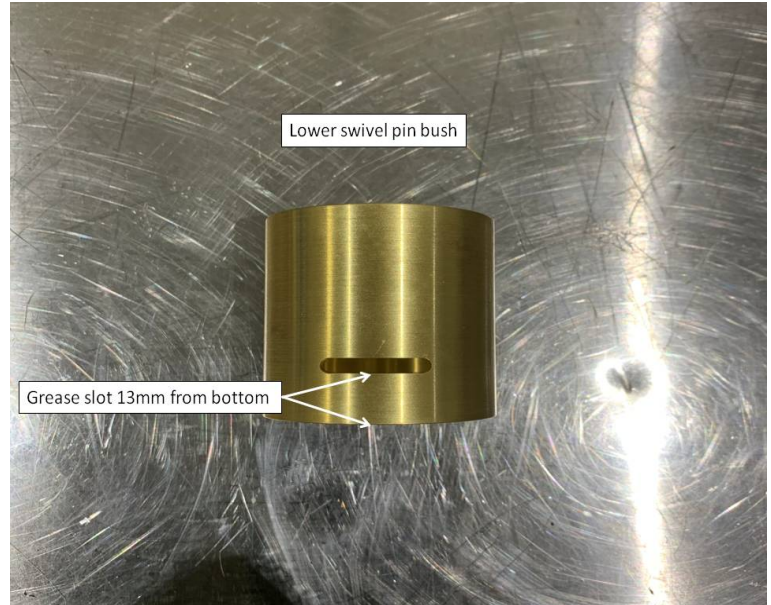
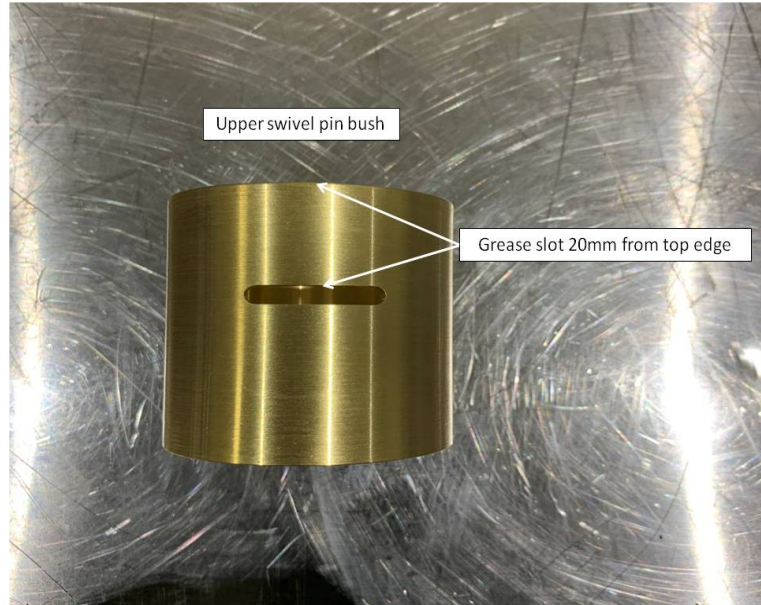
Hammer

Marker

Loctite



Nizpro heavy duty bushing kit suit Yamaha 4.2L V6



Nizpro heavy duty bushing kit suit Yamaha 4.2L V6



Follow the Yamaha manual to disassemble the transom assembly.

On the swivel pin bracket measure down 20mm from the top edge along the centre line, mark and centre punch.



Nizpro heavy duty bushing kit suit Yamaha 4.2L V6



Measure 20mm up along the centre line from the lower edge, mark and centre punch.



Nizpro heavy duty bushing kit suit Yamaha 4.2L V6



Confirm both centre punch mark's are in the correct location then drill a pilot 3mm hole in both locations then using an 8.8mm drill, enlarge the holes.



Nizpro heavy duty bushing kit suit Yamaha 4.2L V6



Using a 1/8th BSP Tap, tap threads into both of the holes.

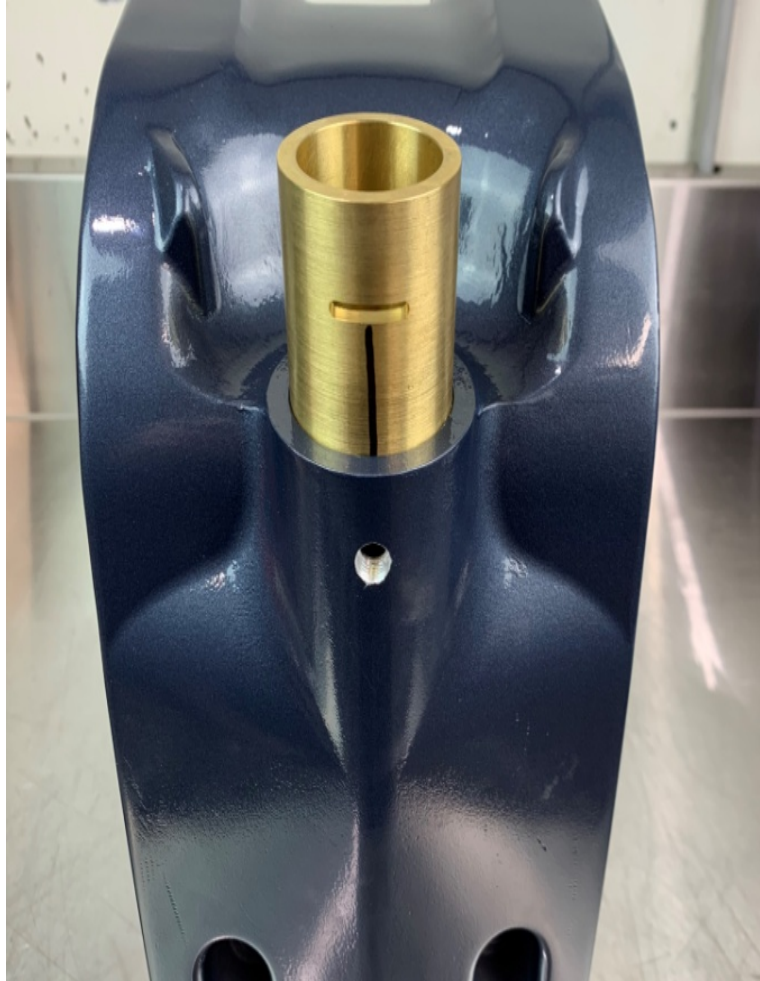


Nizpro heavy duty bushing kit suit Yamaha 4.2L V6



Install the upper swivel pin bush (refer pictures), be sure to align the slot with the grease nipple hole.

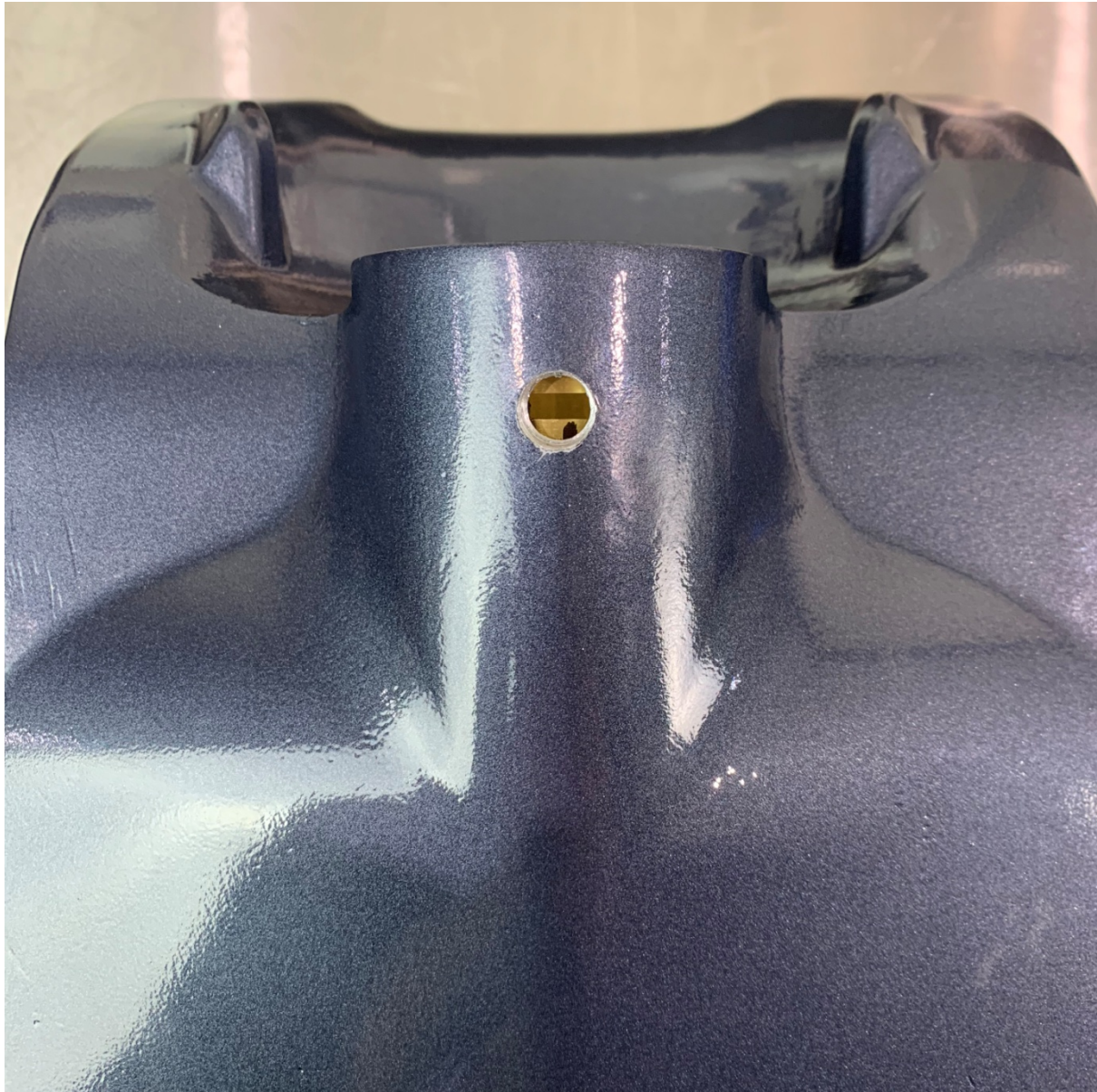
The bush will bottom out and the top of the bush will be flush with the top edge of the swivel bracket.



Nizpro heavy duty bushing kit suit Yamaha 4.2L V6



Confirm the machined slot aligns with the grease nipple hole.



Nizpro heavy duty bushing kit suit Yamaha 4.2L V6



Install the lower swivel pin bush (refer pictures), be sure to align the slot with the grease nipple hole.

The bush will bottom out and the machined slot will be visible through the grease nipple hole.

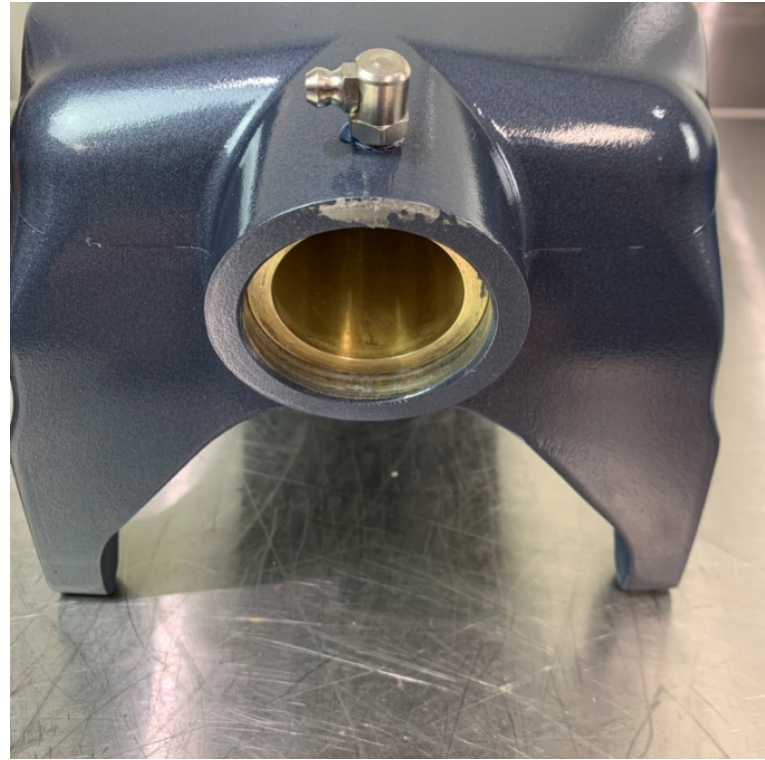
The bush will sit approximately 7mm up from the lower edge of the swivel pin bracket.



Nizpro heavy duty bushing kit suit Yamaha 4.2L V6



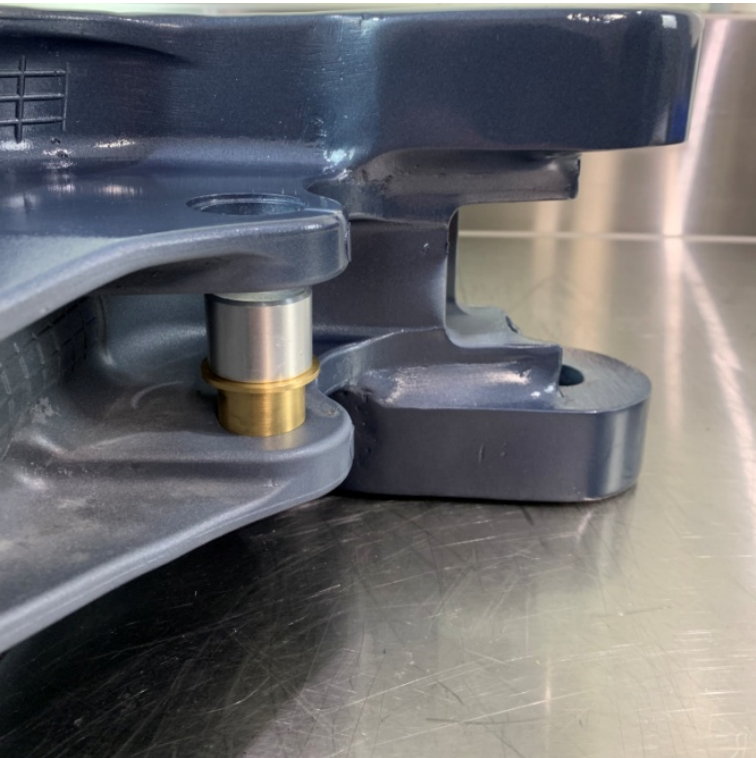
Install both supplied grease nipples using loctite on the treads



Nizpro heavy duty bushing kit suit Yamaha 4.2L V6



Install the trim ram pin bush's, the bushes are installed with the flange towards the centre/inside of the bracket.,



Nizpro heavy duty bushing kit suit Yamaha 4.2L V6



Nizpro heavy duty bushing kit suit Yamaha 4.2L V6



Install the tilt pin bushes. Align the machined slot with the factory grease nipple.



Nizpro heavy duty bushing kit suit Yamaha 4.2L V6



Your swivel pin bracket should now have all bushes installed and look something like this.



Nizpro heavy duty bushing kit suit Yamaha 4.2L V6



Make sure the correct shim washer is fitted to the swivel pin and that a liberal amount of high quality marine grease is applied to all surfaces prior to sliding it into the bracket.

Refit factory O ring into the lower end of the swivel pin then install the new 3mm thick lower shim, ensure both have liberal amounts of high quality marine grease applied.

Reassemble the lower mount paying attention that it is aligned correctly and the correct way up.



Nizpro heavy duty bushing kit suit Yamaha 4.2L V6



Once the swivel pin has been reinstalled fit the trim ram bushes. Use a liberal amount of high quality marine grease and push the bushes into the ram.



Nizpro heavy duty bushing kit suit Yamaha 4.2L V6



Reinstall the trim pump assembly and transom brackets as per the Yamaha manual.

Grease all grease nipples using high quality marine grease. Move all parts through the entire range of motion and regrease the nipples.



Reinstall the power head, lower unit and so on as per the Yamaha manual.

Nizpro heavy duty bushing kit suit Yamaha 4.2L V6

