

YAMAHA 4.2L V6 VMAX SHO ECU  
Flash Instructions 2009-2021  
VF200 VF225 VF250

---



# Yamaha 4.2L V6 VMAX SHO ECU Flash Instructions 2009-2021



## READ BEFORE PROCEEDING

### Important Information

Installing the ECU flash indicates your acceptance of the responsibility and liability associated with the fitment and use of this product.

Please ensure the owner and drivers of the vessel are aware of their responsibilities and liabilities as indicated below.

Thank you for purchasing this ECU flash which has been designed and made with pride. The owner and drivers of the enhanced vessel must be aware that fitment of a ECU flash may affect:

- The vessel's factory warranty.
- Insurance cover and associated liabilities.
- Compatibility with emission and seaworthy certification.
- The validity of a boat license for a vessel.
- The handling capability of the vessel due to increased engine power & torque characteristics.
- The longevity of the engine.
- We recommend the vehicle use premium unleaded fuel only USA pump octane 91 (98 RON).

It is the owner's/driver's responsibility to accept any consequences and liabilities of using the ECU flash and any subsequent effect it may have. Nizpro Marine shall not be liable and shall be 'Held Harmless' for any direct and/or indirect/consequential losses, costs, damages, expenses, injuries or liabilities whatsoever incurred by the owner/driver of the vessel or other parties arising from this ECU flash, its installation and/or its operation. It is recommended that engines have completed at least 10 hours and have been driven, serviced and maintained in accordance with the engine manufacturer's handbook. An engine should be deemed reliable and have delivered all reasonable expectations in line with the engine manufacturer's specifications prior to fitting a ECU flash.

No warranty shall apply where Nizpro Marine have determined improper fitment or handling, misuse in operation, neglect, or accident damage. Engine modifications made prior to or in conjunction with the ECU flash fitment may invalidate the Nizpro Marine limited warranty. Any warranty claims must be made immediately & directly in writing to Nizpro Marine so that a determination can be made promptly. Involvement of a third party or an attempt to repair a perceived/actual fault may invalidate the warranty. To the extent of the law, the determination on any warranty claim & associated costs will be at the sole discretion of Nizpro marine. By installing the ECU flash you acknowledge that all conditions pertaining to this product and its operation have been read, understood and accepted.



## WARNING!

The Nizpro Marine Yamaha 4.2L V6 Performance Repower is designed & calibrated to use:

- Minimum 89 MON Octane Gas (USA)
- Minimum 95-98 RON Octane fuel (Australia)

Failure to use the recommended octane gas/fuel will likely cause severe damage of powerhead components.

## WARNING!

# Yamaha 4.2L V6 VMAX SHO ECU Flash Instructions 2009-2021



Congratulations on the purchase of your Nizpro Marine performance product.

To ensure no delays between the install of your supercharger system and getting back out on the water, we recommend you setup your Woolich Racing account prior to the delivery of your supercharger system.

Create your Woolich Racing customer account by following the link below:

[www.woolichracing.com/CustomerAccount/CreateAccount.aspx](http://www.woolichracing.com/CustomerAccount/CreateAccount.aspx)

Once you have created and activated your account please email [sales@nizpromarine.com](mailto:sales@nizpromarine.com) with the following Woolich Racing account details:

Customer name:

Email Address used for login:

Engine model: Offshore/SHO

Once you have been notified of your account verification please download and install the Woolich Racing software from the link below:

[www.woolichracing.com/tuned/](http://www.woolichracing.com/tuned/)

You are now ready to install your Nizpro Marine Repower.



# Yamaha 4.2L V6 VMAX SHO ECU Flash Instructions 2009-2021



**\*Read these instructions entirely and thoroughly before commencing install\***

**\*You must have a stable Internet connection whilst carrying out the ECU flashing procedure\***

1. Disconnect battery circuit from engine.

**\*Failure to do so may result in having to use Yamaha Diagnostic System to “re-marry” the ECU to the ignition control module\***

2. Remove engine cowl.
3. Remove ECU cover.
4. Disconnect & remove the ECU.
5. At your computer open the Woolich Racing tuned software previously installed.  
(see “Woolich account set-up”)
6. Connect the USB-M v3 to your computer using the micro USB cable provided.  
Once plugged in the USB drivers will be installed automatically.
7. Move the switch on the USB-M v3 to the left position for one minute



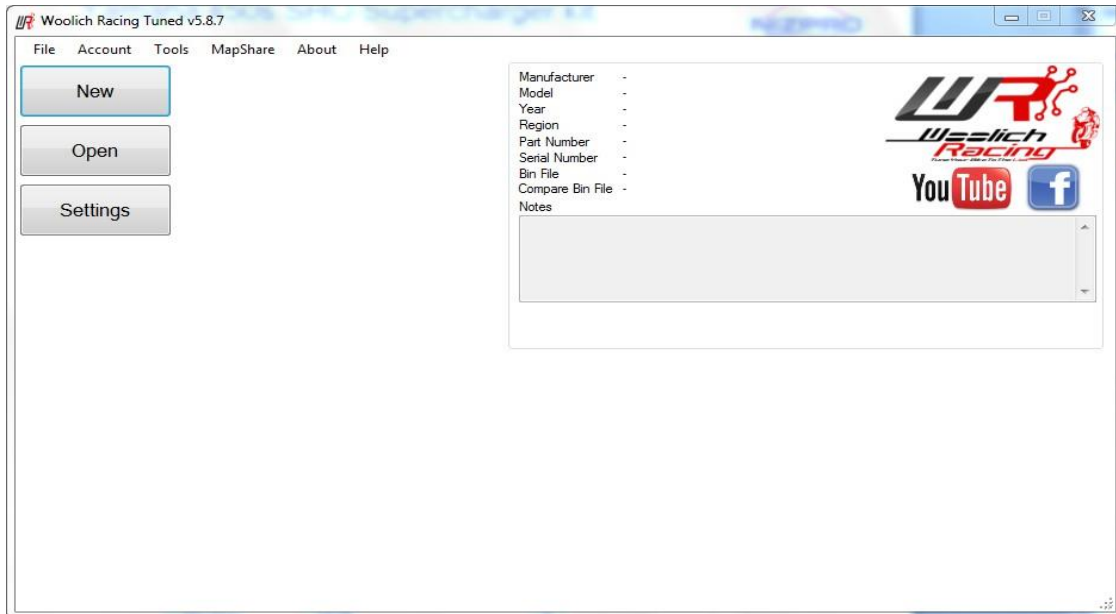
8. Then move the switch to the right position for one minute.



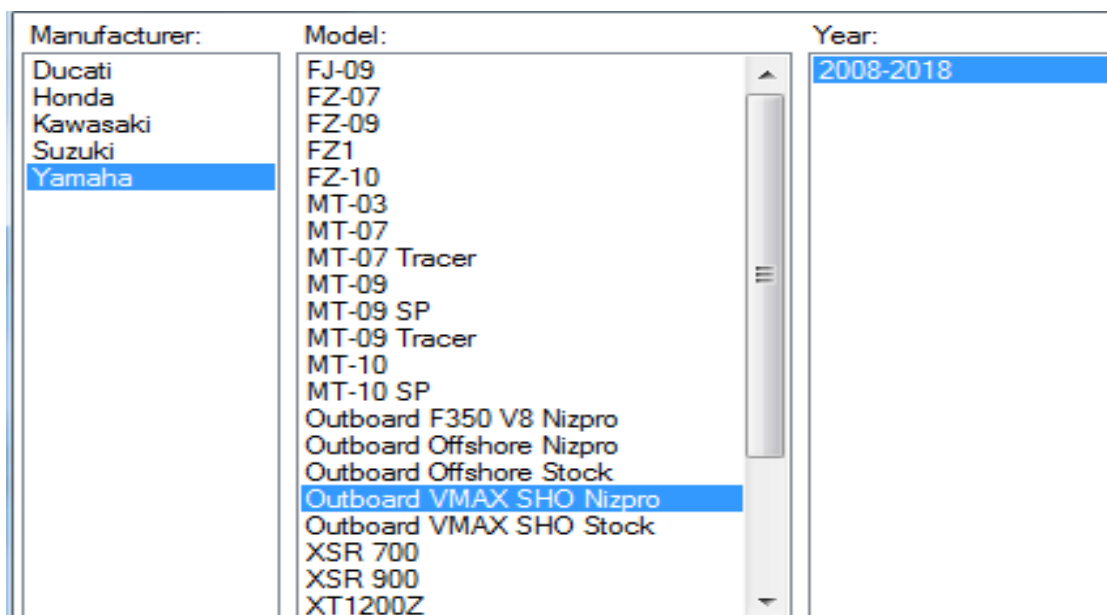
# Yamaha 4.2L V6 VMAX SHO ECU Flash Instructions 2009-2021



9. Open the Woolich Racing Tuned software and then click on the “**NEW**” button.



10. Select “**Yamaha**” and then select “**Outboard VMAX SHO Nizpro**”



# Yamaha 4.2L V6 VMAX SHO ECU Flash Instructions 2009-2021



11. Select the year model of the engine you wish to flash and then depending on your application select either **“NIZPRO-320HP-6400RPM-LIMIT or NIZPRO-320HP-7000RPM-Limit”**

Manufacturer:	Model:	Year:	ECU Part Number:
Ducati	FJ-09	2008-2018	NIZPRO-320-HP-6400-RPM-Limit
Honda	FZ-07		NIZPRO-320-HP-7000-RPM-Limit
Kawasaki	FZ-09		NIZPRO-450S-pre-2015-v02
Suzuki	FZ1		NIZPRO-450S-SHO-Cal-2015-Or
Yamaha	FZ-10		
	MT-03		
	MT-07		
	MT-07 Tracer		
	MT-09		
	MT-09 SP		
	MT-09 Tracer		
	MT-10		
	MT-10 SP		
	Outboard F350 V8 Nizpro		
	Outboard Offshore Nizpro		
	Outboard Offshore Stock		
	Outboard VMAX SHO Nizpro		
	Outboard VMAX SHO Stock		
	XSR 700		
	XSR 900		
	XT1200Z		

12. Click the “NEW” button in the bottom right corner.

The screenshot shows the 'Woolich Racing Tuned v5.9.9' software interface. The 'Model Selector' window is open, displaying a list of manufacturers and models. The 'Yamaha' manufacturer is selected, and the 'Outboard VMAX SHO Nizpro' model is highlighted. The 'Year' is set to '2008-2018'. The 'ECU Part Number' is set to 'NIZPRO-320-HP-6400-RPM-Limit'. The 'Harnesses' section is empty. The 'Compatible Devices' section shows 'USB M v3'. At the bottom, there is a summary of the selected configuration and a table of keys used/total. The 'New' button is highlighted in the bottom right corner.

Manufacturer:	Model:	Year:	ECU Part Number:	Harnesses:
Ducati	FJ-09	2008-2018	NIZPRO-320-HP-6400-RPM-Limit	
Honda	FZ-07		NIZPRO-320-HP-7000-RPM-Limit	
Kawasaki	FZ-09		NIZPRO-450S-pre-2015-v02	
Suzuki	FZ1		NIZPRO-450S-SHO-Cal-2015-Or	
Yamaha	FZ-10			
	MT-03			
	MT-07			
	MT-07 Tracer			
	MT-09			
	MT-09 SP			
	MT-09 Tracer			
	MT-10			
	MT-10 SP			
	Outboard F350			
	Outboard F350 V8 Nizpro			
	Outboard Offshore Nizpro			
	Outboard Offshore Stock			
	Outboard VMAX SHO Nizpro			
	Outboard VMAX SHO Stock			
	XSR 700			
	XSR 900			

Which ECU Part Number should I choose?

Manufacturer:	Model:	Year:	Part Number:	Serial Number:	Region:
Yamaha	Outboard VMAX SHO Nizpro	2008-2018	NIZPRO-320-HP-6400-RPM-Limit		All Regions

Keys (Used/Total)
Race Tools Keys 0/0
Launch Control Keys 0/0
Quickshifter Keys 0/0
Pit Speed Limiter Keys 0/0

New Download Purchase





# Yamaha 4.2L V6 VMAX SHO ECU Flash Instructions 2009-2021



13. Plug the supplied ECU flashing harness into the USB-M v3 and then the ECU you wish to flash. Connect the jumper leads to a well charged 12v battery or a 12v constant power supply. Red to positive terminal, black to negative terminal

\*Please note Offshore and SHO ECU flashing harnesses are model specific and cannot be interchanged, Attempting to do so may result in damage to the connection pins of the ECU\*

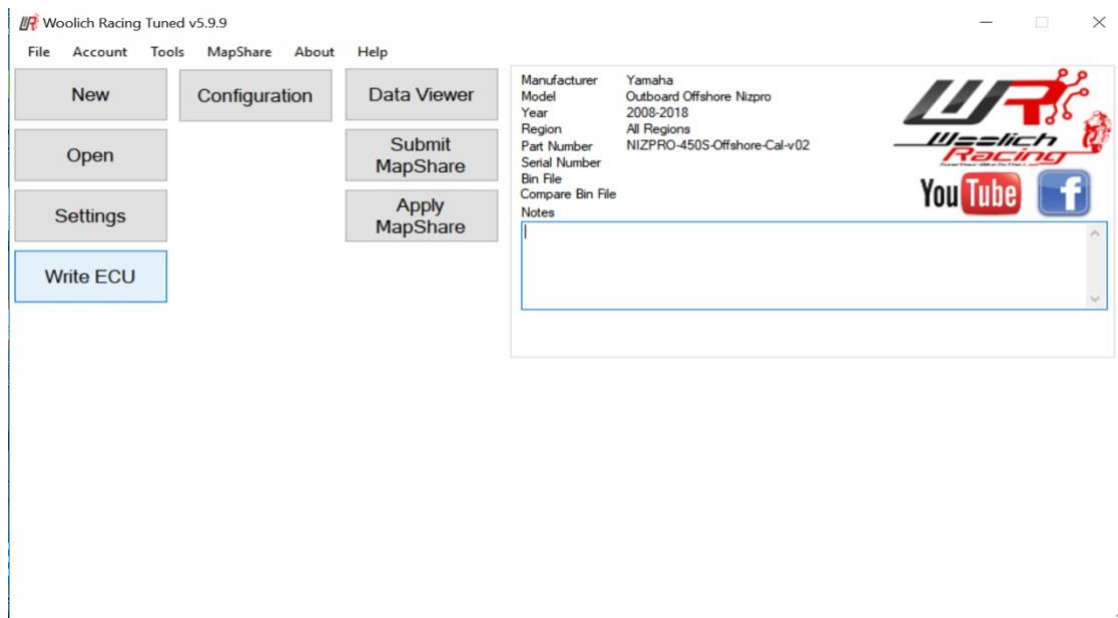




# Yamaha 4.2L V6 VMAX SHO ECU Flash Instructions 2009-2021



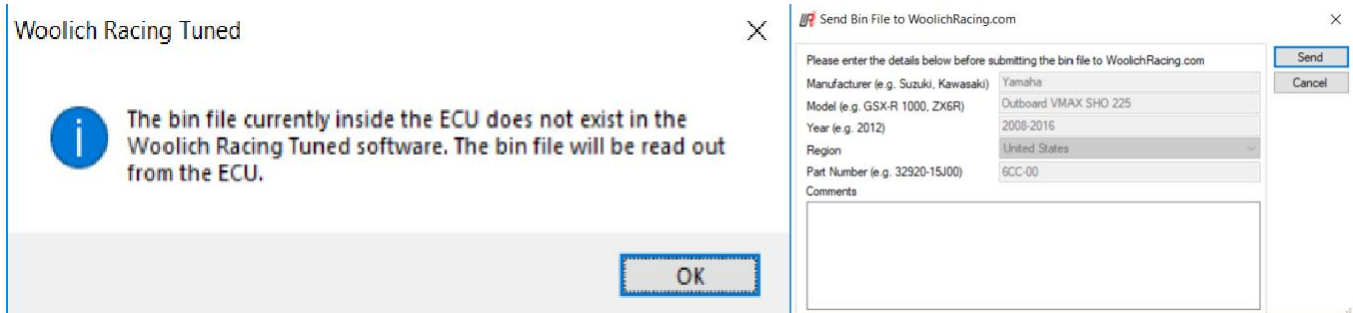
14. Click the **"WRITE ECU"** button, Read the warnings and check the items listed on screen and then click **"OK"**. The flashing procedure will now commence, It will take approximately 5 Minutes to flash the ECU with the new program.



# Yamaha 4.2L V6 VMAX SHO ECU Flash Instructions 2009-2021



15. \*If the ECU you are trying to program is not in the Woolich Racing database you will be prompted to read the ECU so we can add the factory ECU file into our database. Simply follow the prompts and then click **“WRITE ECU”** again.\*



16. Once the flashing procedure is complete, disconnect the ECU from the flashing device and close the Woolich Racing software.
17. Refit ECU to the engine and reconnect all wiring plugs.
18. Reconnect battery circuit.

Congratulations, you have now successfully increased the HP of your Yamaha outboard engine. Thankyou for choosing a Nizpro Marine performance product. If you are happy with the upgrade in performance please leave a review on our Facebook page.

If you are unhappy with the product, we would love to hear your thoughts. Please send an email to [sales@nizpromarine.com](mailto:sales@nizpromarine.com).

