

Nizpro Yamaha ECU Flash Instructions

4.2L V6 SHO 2008-2021

VF200/VF225/VF250

UPDATED NOVEMBER 2024



READ BEFORE PROCEEDING

Important Information

Installing the ECU flash indicates your acceptance of the responsibility and liability associated with the fitment and use of this product.

Please ensure the owner and drivers of the vessel are aware of their responsibilities and liabilities as indicated below.

Thank you for purchasing this ECU flash which has been designed and made with pride. The owner and drivers of the enhanced vessel must be aware that fitment of a ECU flash may affect:

- The vessel's factory warranty.
- Insurance cover and associated liabilities.
- Compatibility with emission and seaworthy certification.
- The validity of a boat license for a vessel.
- The handling capability of the vessel due to increased engine power & torque characteristics.
- The longevity of the engine.
- We recommend the vessel use premium unleaded fuel only USA pump octane 89 (95-98 AUS RON).

It is the owner's/driver's responsibility to accept any consequences and liabilities of using the ECU flash and any subsequent effect it may have. Nizpro Marine shall not be liable and shall be 'Held Harmless' for any direct and/or indirect/consequential losses, costs, damages, expenses, injuries or liabilities whatsoever incurred by the owner/driver of the vessel or other parties arising from this ECU flash, its installation and/or its operation. It is recommended that engines have completed at least 10 hours and have been driven, serviced and maintained in accordance with the engine manufacturer's handbook. An engine should be deemed reliable and have delivered all reasonable expectations in line with the engine manufacturer's specifications prior to fitting a ECU flash.

No warranty shall apply where Nizpro Marine have determined improper fitment or handling, misuse in operation, neglect, or accident damage. Engine modifications made prior to or in conjunction with the ECU flash fitment may invalidate the Nizpro Marine limited warranty. Any warranty claims must be made immediately & directly in writing to Nizpro Marine so that a determination can be made promptly. Involvement of a third party or an attempt to repair a perceived/actual fault may invalidate the warranty. To the extent of the law, the determination on any warranty claim & associated costs will be at the sole discretion of Nizpro marine.

By installing the ECU flash you acknowledge that all conditions pertaining to this product and its operation have been read, understood and accepted.



WARNING!

The Nizpro Marine Yamaha 4.2L V6 Performance Repower is designed & calibrated to use:

- Minimum 89 MON Octane Gas (USA)
- Minimum 95-98 RON Octane fuel (Australia)

Failure to use the recommended octane gas/fuel will likely cause severe damage of powerhead components.

WARNING!



Congratulations on the purchase of your Nizpro Marine Performance Product.

To ensure no delays, we recommend you setup your Woolich Racing account prior to the delivery of your Self install Kit.

Create your Woolich Racing customer account by following the link below:

www.woolichracing.com/CustomerAccount/CreateAccount.aspx

Once you have created and activated your account please email sales@nizpromarine.com with the following Woolich Racing account details:

Customer name:

Email Address used for login:

Engine model: SHO V6 4.2L VF200 / VF225 / VF250 2008 to 2021

After we have notified you of your account verification, please download and install the Woolich Racing software from the link below:

www.woolichracing.com/tuned/

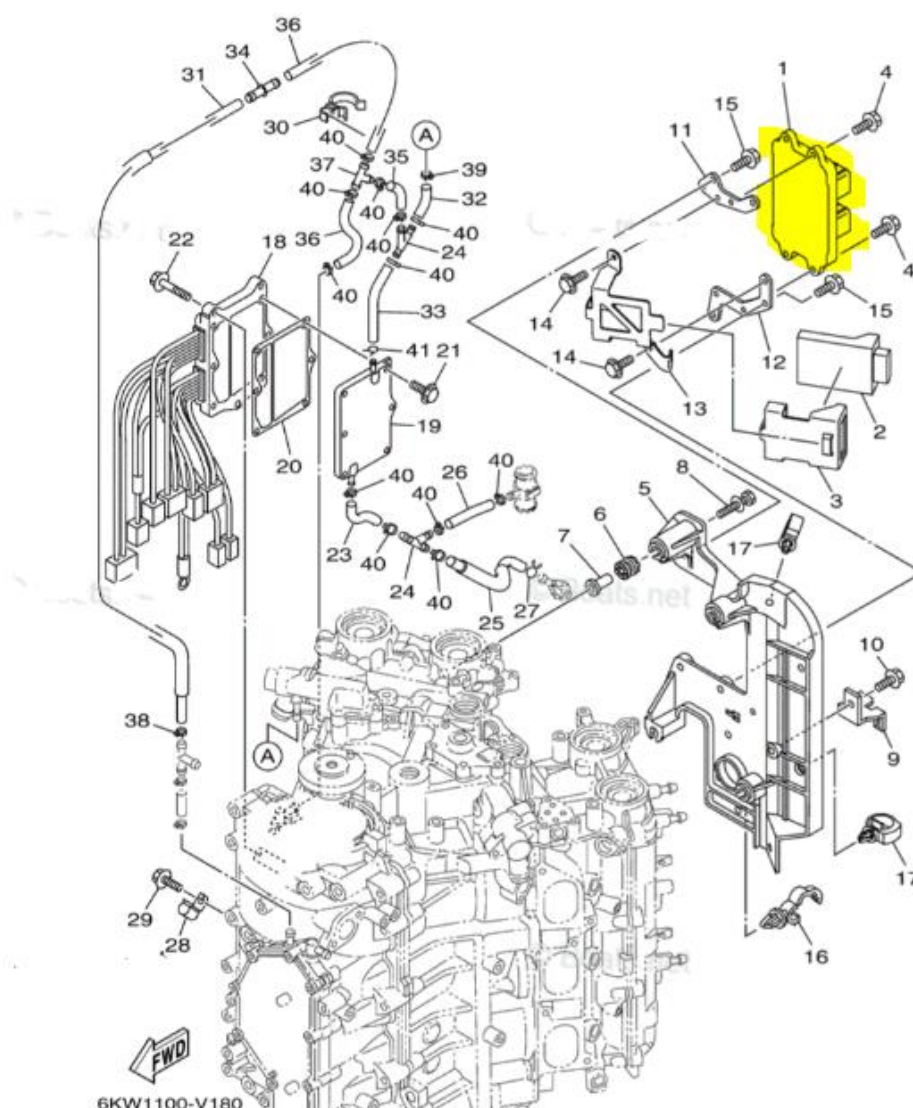
You are now ready to install your Nizpro Marine Performance Repower.

Let's get started!!

Read these instructions entirely and thoroughly before commencing install.

Note: You must have stable Internet when flashing the ECU.

1. **Disconnect battery circuit from engine.**
2. Remove engine cowl.
3. Disconnect & remove the ECU.

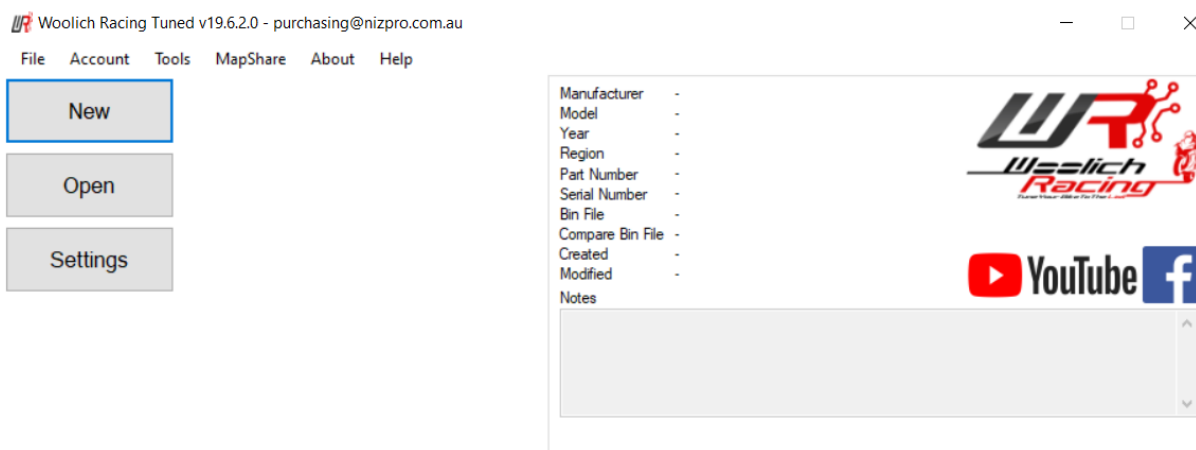


4. At your computer, open the Woolich Racing tuned software previously installed. (see “Woolich account set-up”)

5. Connect the USB-M v3 to your computer using the micro-USB cable provided.
Once plugged in the USB drivers will be updated & installed automatically.
6. Move the switch on the USB-M v3 to the left position for one minute.



7. Then move the switch to the right position for one minute.



8. Open the Woolich Racing Tuned software and then click on the **"NEW"** button which opens the tune library.

9. In this instance, the customer has a **6CB-12** ECU.
10. Now select **Yamaha Marine**, select **V6 VMAX SHO Stock**, and choose the select the **2008 to 2021** tab and select the matching file to the ECU, in this case the stock **6CB-12 VF250** file.

Model Selector

Manufacturer:	Model:	Year:	Search ECU Part Number:
BMW Ducati Harley Davidson Honda Husqvarna Kawasaki KTM Suzuki Triumph Yamaha Yamaha Marine	Jetski Nizpro Jetski Stock L4 Offshore 1.0L 1.8L Nizpro L4 Offshore 1.0L 1.8L Stock L4 Offshore 2.7L 2.8L Nizpro L4 Offshore 2.7L 2.8L Stock L4 VMAX SHO 1.8L Nizpro L4 VMAX SHO 1.8L Stock L4 VMAX SHO 2.8L Nizpro L4 VMAX SHO 2.8L Stock Nizpro Development Nizpro Supercharged - Stg 1 Nizpro Supercharged - Stg 2 Nizpro Supercharged - Stg 3 V6 Offshore Nizpro V6 Offshore Stock V6 VMAX SHO Nizpro V6 VMAX SHO Stock V8 F300 Nizpro V8 F300 Stock V8 F350 Nizpro	2008-2021 2022-2024	6CB-00 VF250 6CB-01 VF250 6CB-02 VF250 6CB-03 VF250 6CB-10 VF250 6CB-11 VF250 6CB-12 VF250 6CC-00 VF225 6CC-01 VF225 6CC-02 VF225 6CC-03 VF225 6CC-04 VF225 6CC-10 VF225 6CC-11 VF225 6CC-12 VF225 6CD-00 VF200 6CD-01 VF200 6CD-02 VF200 6CD-03 VF200 6CD-04 VF200 6CD-10 VF200

Bin File Details

Manufacturer: Yamaha Marine
 Model: V6 VMAX SHO Stock
 Year: 2008-2021
 Part Number: 6CB-12 VF250

Which ECU Part Number should I choose?

New

11. Now click the **“NEW”** button in the bottom right corner. This will take you to the READ/WRITE screen.

Woolich Racing Tuned v19.6.2.0 - purchasing@nizpro.com.au

File Account Tools About Help

New Configuration Data Viewer

Open




Settings

Read ECU

Write ECU

Manufacturer	Yamaha Marine
Model	V6 VMAX SHO Stock
Year	2008-2021
Region	All Regions
Part Number	6CB-12 VF250
Serial Number	HAD393
Bin File	
Compare Bin File	

Notes


 YouTube 

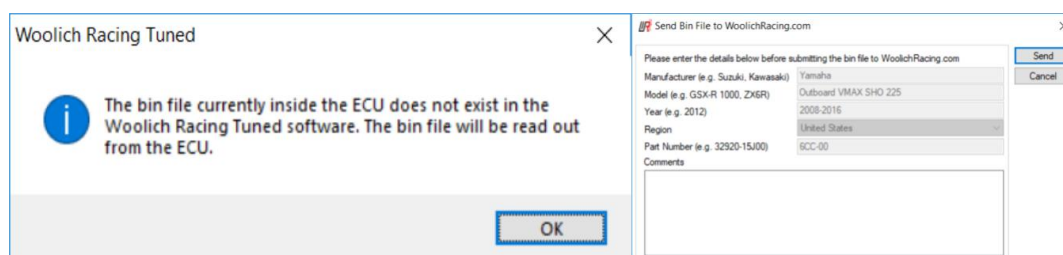
12. Plug the supplied ECU flashing harness into the USB-M v3 and then connect the ECU you wish to flash. **The supplied YBH-14 flash harness will only connect to the middle socket on the ECU.**



13. Connect the power to a well charged 12v battery, **Red to positive** terminal, **Black to negative** terminal or use the included 12v AC power supply in the kit.
14. **Minimum voltage of 12.6-12.8V and up to 13.2V is recommended.** Please also ensure you have good current. If in doubt, please use your boat battery.



15. Now click the **“READ ECU”** button, read the warnings and click on each to tick the items listed on screen, then click **“OK”**.
16. The program will commence reading the ECU and when completed, ensure that the description of the file **READ** out of the ECU matches the Version file number or if there is no Version number, the main number on the ECU. In this case, it should READ out as a **6CB-12 VF250 stock file**.
17. If the software comes up with an Unrecognised Bin File as shown below, this indicates the file is not yet available in the Tune library.
18. In this case, please select the Tools tab and scroll down to Send Bin File to Woolich Racing. Complete the information required and in the Support Ticket # field, list your name. Please send an email to sales@nizpromarine.com telling us you have submitted a file and wait for reply from Nizpro.



19. **If the ECU READ matches the ECU file number**, now select the **NEW** button again to return to the Tune Library and this time select **YAMAHA MARINE, V6 VMAX SHO Nizpro, 2008-2021** and choose either the **6CB-12 VF250 332hp 6200rpm V2** or the **6CB-12 VF250 332hp 7100rpm V2** file, whichever you wish.
20. Click **NEW** again to return to the **READ/WRITE** screen.
21. Now you will select the **WRITE ECU** button, read the warnings, check the items listed on screen and click **“OK”**. The flashing procedure will begin and will take approximately 5-6 minutes to complete with the new Performance Repower. You will see a **GREEN** progress bar appear at the bottom of the screen. When this finishes, the software will ask you to turn the power OFF.
22. **PLEASE DO NOT TURN THE POWER OFF.**

23. Instead, select **READ** ECU again and ensure the ECU reads out as the **6CB-12 VF250 332hp 6200rpm V2 file** you selected.
24. Once this procedure is complete and the new performance file confirmed, disconnect the power to the ECU by removing a connection from the power source and close the Woolich Racing software.
25. Refit ECU to the engine and reconnect all wiring plugs.
26. Reconnect engine power and water test operation.

Congratulations, you have now successfully increased the power and improved the fuel efficiency of your Yamaha outboard engine.

Thank you for choosing a Nizpro Marine Performance Repower.

Go Further, Faster with Nizpro, all day, every day....

If you are happy with the upgrade in performance, please leave a review on our Facebook page.

If you are unhappy with the product, please contact us directly as we would love to hear your thoughts and see if we can assist in any way to optimise your performance.

Please send an email to sales@nizpromarine.com.