

Yamaha ECU Flash Instructions

F350 4.3L V6 OFFSHORE
2023 to Current
Flash Instructions



READ BEFORE PROCEEDING

Important Information

Installing the ECU flash indicates your acceptance of the responsibility and liability associated with the fitment and use of this product.

Please ensure the owner and drivers of the vessel are aware of their responsibilities and liabilities as indicated below.

Thank you for purchasing this ECU flash which has been designed and made with pride. The owner and drivers of the enhanced vessel must be aware that fitment of a ECU flash may affect:

- The vessel's factory warranty.
- Insurance cover and associated liabilities.
- Compatibility with emission and seaworthy certification.
- The validity of a boat license for a vessel.
- The handling capability of the vessel due to increased engine power & torque characteristics.
- The longevity of the engine.
- We recommend the vessel use premium unleaded fuel only USA pump octane 89 (95-98 RON AUS).

It is the owner's/driver's responsibility to accept any consequences and liabilities of using the ECU flash and any subsequent effect it may have. Nizpro Marine shall not be liable and shall be 'Held Harmless' for any direct and/or indirect/consequential losses, costs, damages, expenses, injuries or liabilities whatsoever incurred by the owner/driver of the vessel or other parties arising from this ECU flash, its installation and/or its operation. It is recommended that engines have completed at least 10 hours and have been driven, serviced and maintained in accordance with the engine manufacturer's handbook. An engine should be deemed reliable and have delivered all reasonable expectations in line with the engine manufacturer's specifications prior to fitting a ECU flash.

No warranty shall apply where Nizpro Marine have determined improper fitment or handling, misuse in operation, neglect, or accident damage. Engine modifications made prior to or in conjunction with the ECU flash fitment may invalidate the Nizpro Marine limited warranty. Any warranty claims must be made immediately & directly in writing to Nizpro Marine so that a determination can be made promptly. Involvement of a third party or an attempt to repair a perceived/actual fault may invalidate the warranty. To the extent of the law, the determination on any warranty claim & associated costs will be at the sole discretion of Nizpro marine.

By installing the ECU flash you acknowledge that all conditions pertaining to this product and its operation have been read, understood and accepted.

WARNING!

This Nizpro Marine Performance Repower has been designed and calibrated for Minimum 87 AKI US gas or 91 RON AUS fuel (Australia).

Failure to use the minimum recommended octane gas/fuel will likely cause severe damage of powerhead components.

WARNING!

Congratulations on the purchase of your Nizpro Marine Performance Product.

To ensure no delays, we recommend you setup your Woolich Racing account prior to the delivery of your DIY Kit.

Create your Woolich Racing customer account by following the link below:

www.woolichracing.com/CustomerAccount/CreateAccount.aspx

Once you have created and activated your account please email sales@nizpromarine.com with the following Woolich Racing account details:

Customer name:

Email Address used for login:

Engine model: OFFSHORE V6 4.3L F350

After we have notified you of your account verification, please download and install the Woolich Racing software from the link below:

www.woolichracing.com/tuned/

You are now ready to install your Nizpro Marine Performance Repower.

Let's get started!!

Read these instructions entirely and thoroughly before commencing install.

Note: You must have a stable Internet connection whilst carrying out the ECU flashing procedure.

1. Disconnect battery circuit from engine.

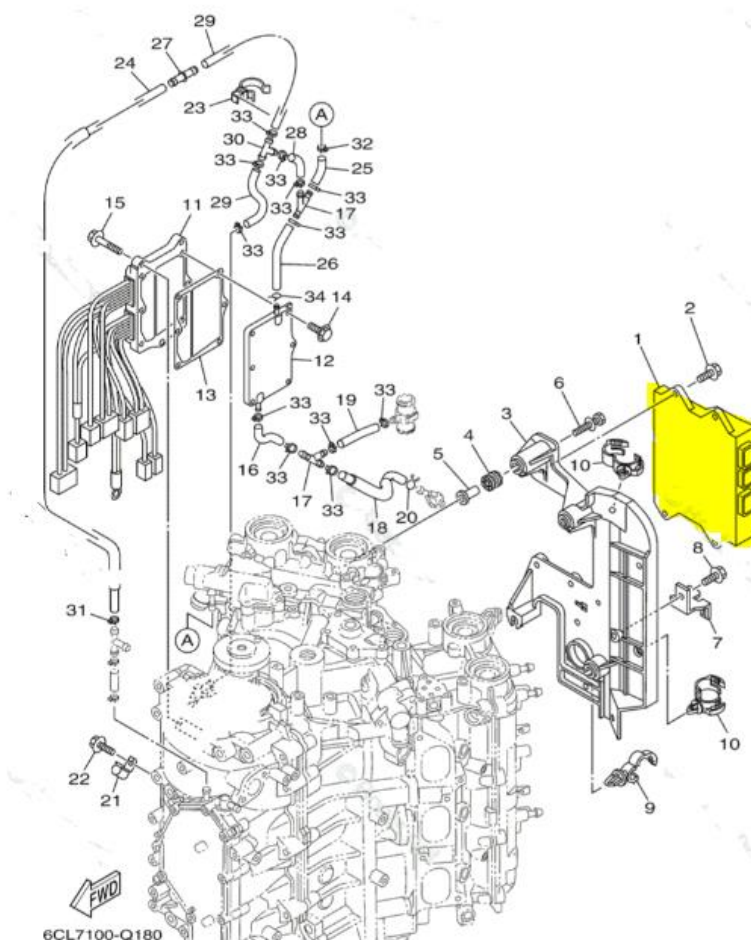
Failure to do so may result in having to use Yamaha Diagnostic System to “re-marry” the ECU to the ignition control module

2. Remove engine cowl.

3. Remove ECU cover.

4. Disconnect & remove the ECU.

5. Please note that each ECU is linked to a digital control and **ECUs MUST BE REINSTALLED ONTO THE SAME ENGINE THEY WERE REMOVED FROM. Mark clearly as Port, Starboard, Middle etc.**



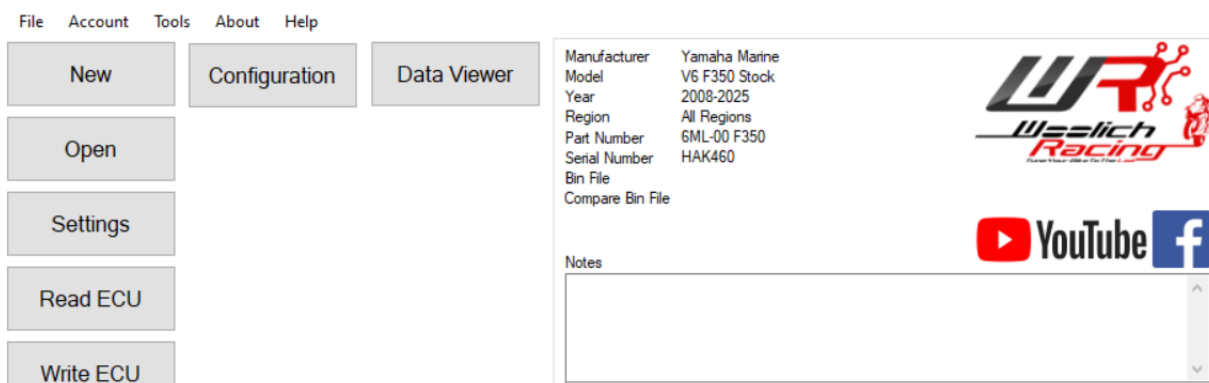
6. At your computer, open the Woolich Racing tuned software previously installed. (see “Woolich account set-up”)
7. Connect the USB-M v3 to your computer using the micro-USB cable provided. Once plugged in the USB drivers will be updated & installed automatically.
8. Move the switch on the USB-M v3 to the left position for one minute.



9. Then move the switch to the right position for one minute.



10. Open the Woolich Racing Tuned software and then click on the “NEW” button.



11. Select **Yamaha Marine**, select **V6 F350 Stock** and the **6ML-00** Stock file will be listed, as shown below.

| Manufacturer: | Model: | Year: | Search ECU Part Number: |
|--|--|-----------|-------------------------|
| BMW Ducati Harley Davidson Honda Husqvarna Kawasaki KTM Suzuki Triumph Yamaha Yamaha Marine | Jetski Nizpro Jetski Stock L4 Offshore 1.0L 1.8L Nizpro L4 Offshore 1.0L 1.8L Stock L4 Offshore 2.7L 2.8L Nizpro L4 Offshore 2.7L 2.8L Stock L4 VMAX SHO 1.8L Nizpro L4 VMAX SHO 1.8L Stock L4 VMAX SHO 2.8L Nizpro L4 VMAX SHO 2.8L Stock Nizpro Development Nizpro Supercharged - Stg 1 Nizpro Supercharged - Stg 2 Nizpro Supercharged - Stg 3 V6 F350 Stock V6 Offshore Nizpro V6 Offshore Stock V6 VMAX SHO Nizpro V6 VMAX SHO Stock V8 F300 Nizpro | 2008-2025 | 6ML-00 F350 |

| Bin File Details |
|--|
| Manufacturer: Yamaha Marine Model: V6 F350 Stock Year: 2008-2025 Part Number: 6ML-00 F350 Serial Number: HAK460 Region: All Regions Read Type: Read Ok Engine Data: None Key Type: Standard Bin File Key |




[Which ECU Part Number should I choose?](#)

New
Download
Purchase

12. Next click the “NEW” button in the bottom right corner. This will take you to the READ/WRITE Screen.

| File | Account | Tools | About | Help |
|-----------|---------------|-------------|-------|------|
| New | Configuration | Data Viewer | | |
| Open | | | | |
| Settings | | | | |
| Read ECU | | | | |
| Write ECU | | | | |

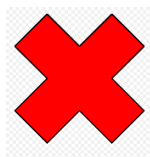
| Manufacturer | Model | Year | Region | Part Number | Serial Number | Bin File | Compare Bin File |
|---------------|---------------|-----------|-------------|-------------|---------------|----------|------------------|
| Yamaha Marine | V6 F350 Stock | 2008-2025 | All Regions | 6ML-00 F350 | HAK460 | | |

Notes

13. Plug the supplied **YBH-13 Nizpro ECU flashing harness** into the USB-Mv3 dongle and then connect the ECU you wish to flash.

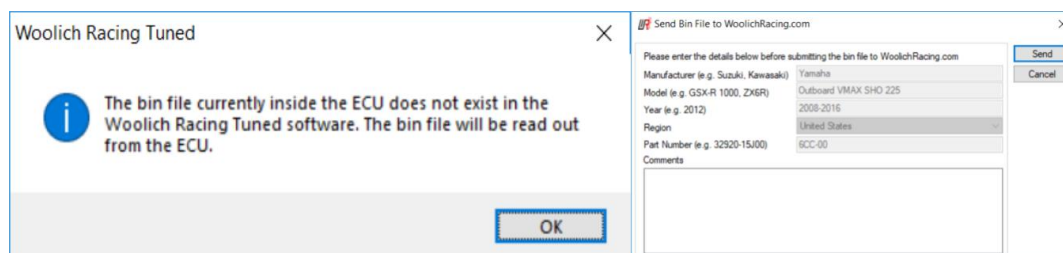
NOTE: The harness will only connect to the RHS Port on the ECU.




14. Connect the power lead to the supplied AC power supply in your Self install Kit or to a well charged 12v battery, Red to positive terminal, Black to negative terminal.
15. Minimum voltage of 12.6-12.8V up to 13.6V is recommended. Please also ensure you have good current.



16. Now click the **“READ ECU”** button, read the warnings and click on each to tick the items listed on screen, then click **“OK”**. The program will commence reading the ECU. When completed, ensure that the description of the file **READ** out of the ECU matches the **6ML-00** file number on the ECU.
17. If the software comes up with an Unrecognised Bin File note as shown below, then please select the Tools tab and scroll down to Send Bin File to Woolich Racing. Complete the information required and in the Support Ticket # field, list your name. Next, please send an email to sales@nizpromarine.com telling us you have submitted a file and wait for a reply from Nizpro.



18. If the **ECU READ** was successful and matches the **6ML-00** Stock ECU file number, now please select **NEW**, choose the **V6 F350 Nizpro** category and select the 6ML-00 tune to suit your engine. Choose from the **NIZPRO 376 ECO**, the **NIZPRO 382 ENHANCED** or the **NIZPRO 391 ENHANCED** Performance Files. In this case we have selected the **376 hp ECO** tune.

 Model Selector

| Manufacturer: | Model: | Year: | Search ECU Part Number: |
|-----------------|------------------------------|-----------|---|
| BMW | Jet ski Nizpro | 2008-2025 | 6ML-00 F350 375HP Eco 6300rpm |
| Ducati | Jet ski Stock | | 6ML-00 F350 382HP-390HP w Trumpet 6300rpm |
| Harley Davidson | L4 Offshore 1.0L 1.8L Nizpro | | |
| Honda | L4 Offshore 1.0L 1.8L Stock | | |
| Husqvarna | L4 Offshore 2.7L 2.8L Nizpro | | |
| Kawasaki | L4 Offshore 2.7L 2.8L Stock | | |
| KTM | L4 VMAX SHO 1.8L Nizpro | | |
| Suzuki | L4 VMAX SHO 1.8L Stock | | |
| Triumph | L4 VMAX SHO 2.8L Nizpro | | |
| Yamaha | L4 VMAX SHO 2.8L Stock | | |
| Yamaha Marine | Nizpro Development | | |
| | Nizpro Supercharged - Stg 1 | | |
| | Nizpro Supercharged - Stg 2 | | |
| | Nizpro Supercharged - Stg 3 | | |
| | V6 F350 Nizpro | | |
| | V6 F350 Stock | | |
| | V6 Offshore Nizpro | | |
| | V6 Offshore Stock | | |
| | V6 VMAX SHO Nizpro | | |
| | V6 VMAX SHO Stock | | |
| | V8 F300 Nizpro | | |

Bin File Details

| | |
|---------------|-------------------------------|
| Manufacturer: | Yamaha Marine |
| Model: | V6 F350 Nizpro |
| Year: | 2008-2025 |
| Part Number: | 6ML-00 F350 375HP Eco 6300rpm |

[Which ECU Part Number should I choose?](#)

19. Click **NEW** again to return to the READ/WRITE Screen again.
20. This time select **"WRITE ECU"**, read the warnings, check the items listed on screen and then click **"OK"**. The flashing procedure will begin and will take approximately 5-6 minutes to flash the ECU with the new Performance Repower. You will see a **GREEN** progress bar appear at the bottom of the screen.

21. Once the flashing procedure is complete, you will again need to READ the ECU to confirm that the ECU now has the 6ML-00 376 ECO Nizpro 6300 rpm Performance tune installed.

22. If YES, please disconnect the power to the ECU by removing a connection from the power source and you can close the Woolich Racing software.

23. Refit ECU to the **same** engine and reconnect all engine harness connections.

24. Reconnect battery circuit and test operation.

Congratulations, you have now successfully increased the power and maximized the fuel efficiency of your Yamaha F350 4.3L OFFSHORE engine.

Thank you for choosing a Nizpro Marine Performance Repower, we hope you will like it as much as we do.

If you are happy with the upgrade in performance and efficiency, please leave a review on our Facebook page.

If you are unhappy with the product, please contact us directly as we would love to hear your thoughts and see if we can assist in any way to optimise your performance results.

Please send an email to sales@nizpromarine.com.